

girl scouts  
of northern california

# Juliette Guidebook

No troop? No problem!  
Your full Girl Scout adventure starts here.



# Valuable Resources



## gsHelpCenter

Find information pertaining to all areas of Girl Scouts, including the resources below. It's jam-packed and regularly checked by council staff so that it's up to date and useful for all members!



## Annual Program Guide & Events Calendar

These resources highlight our council-run programs and events and are valuable tools for planning memorable adventures with your family.



## Camp Website

Explore outdoor opportunities like summer sleepaway camps, day camps, properties, outdoor resources, and more!



## Monthly Email Newsletters

Check your email at the start of each month for our council newsletter that includes key updates and upcoming events and opportunities for Girl Scouts.



## myGS

This is the member account management system, where you'll manage your membership information, find training, planning tools, and much more.



## Program Curriculum

The Girl Scout handbooks and badge pamphlets (print or digital) give guidance on leading your Juliette and earning badges. Purchase these from the shop or download them from the Volunteer Toolkit (VTK) in myGS.



## Safety Activity Checkpoints (SAC) & Volunteer Essentials

A collection of safety guidelines for GSUSA and council-approved activities and our primary, national resources for Girl Scout volunteers.



## Service Unit Meetings

Connect with local Girl Scout volunteers in your community. Service Units organize events locally and your Juliette can join the fun!

[Learn More](#)



[Share Your Story](#)



## Stay Connected

Follow us on Facebook, Instagram, TikTok, and LinkedIn (@gsnorcal) for news, program updates, and stories from Juliettes across Northern California. Have a story of your own? We'd love to hear it. Scan the QR code to share your story.

## A Message from our CEO

At Girl Scouts, we know that all girls and gender-expansive youth have a different path.

The Juliette (individually registered Girl Scout) pathway offers the flexibility to participate on a schedule that fits your family's life, while still benefiting from all that Girl Scouts has to offer.

Girls build confidence by setting their own goals, exploring their passions, and taking the lead in their experiences. Along the way, they stay connected to a larger community that supports their growth, leadership, and sense of belonging.

Whether this is your first step into Girl Scouts or a new way to stay involved, we're so glad you're here.

Yours in Girl Scouting,  
Mary-Jane Strom  
CEO, Girl Scouts of Northern California



Behind every Girl Scout is a dedicated local team ready to help them earn their next badge, head out on a camping adventure, or lead a service project. With over 46,000 members across 19 counties, from Gilroy to the Oregon border, Girl Scouts of Northern California is a vibrant community committed to building girls of courage, confidence, and character.

## What is a Juliette?

No troop? No problem! Girls in grades K-12 can participate as **Juliettes**—individually registered Girl Scouts named after our founder, Juliette Gordon Low. Just like her, Juliettes blaze their own trail. Juliette Girl Scouts won't attend troop meetings; instead, they work on Girl Scout programming with the guidance of a caregiver or another adult mentor.

Think of Juliettes as an “independent study” version of Girl Scouting. You have the freedom to mix and match activities that interest you, from STEM workshops and outdoor adventures, to the Cookie Program and leadership projects.

With the help of supportive adults, Juliettes have the opportunity to build a sisterhood through these experiences with fellow Girl Scouts.



## How does it work?

Girl Scouts is “girl-led,” so Juliettes work with their caregivers or their supportive adult to choose badges to earn and activities to attend. Together, they set the schedule, the pace, and the skills to grow. Adults have the freedom to follow their Juliette's lead when they want to know more—even after the badge is done!

## What is a Juliette Mentor?

Juliette Mentors meet regularly with the Juliette Girl Scout to discuss, plan, and do activities together. The Juliette Mentor role can be filled by the Juliette's caregiver or another caring adult like an aunt or uncle, grandparent, or close family friend. This mentor has access to online planning tools and volunteer training.

## How do I start?

Explore this guide to discover the resources available to you. Once you've chosen your Juliette Mentor, simply visit [www.gsnorcal.org](http://www.gsnorcal.org) to register as a member and start your journey!

Questions? Email [info@gsnorcal.org](mailto:info@gsnorcal.org).

# Benefits of Girl Scouting

The Girl Scout Mission is all about building youth of courage, confidence, and character, who make the world a better place. But how exactly does that happen? Our success comes from focusing on the **Girl Scout Leadership Experience (GSLE)**. The GSLE is designed to help youth develop as leaders and build confidence by learning new skills. It also ensures that Girl Scouts at every level are sharing a powerful, national experience—changing the world together! Each of our programs incorporates the GSLE and helps youth achieve these outcomes.

## Four Pillars of the GSLE

Everything in Girl Scouts centers around our four pillars, designed to meet youth where they are now and to grow along with them.



STEM



Outdoors



Life Skills



Entrepreneurship

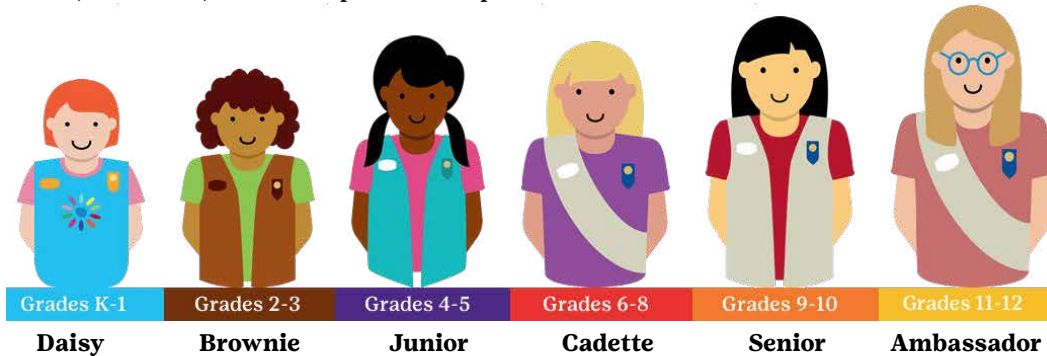
## Five Outcomes of the GSLE

When youth participate in Girl Scouts, they thrive in five key ways:

1. Strong Sense of Self
2. Positive Values
3. Challenge Seeking
4. Healthy Relationships
5. Community Problem Solving

## Girl Scout Program Levels

Girl Scouts progress to the next level based on their grade. From grades K-12, Girl Scouts gain important skills in areas that form the foundation of the Girl Scout Leadership Experience: STEM (science, technology, engineering, and math), outdoors, life skills, and entrepreneurship.



## The Girl Scout Leadership Experience

Leading the way across every sector.



**100%**  
of all female U.S.  
Secretaries of State



**90%**  
of all female  
U.S. astronauts



**75%**  
of all female  
U.S. Senators



**80%**  
of all female  
tech leaders

# A Movement for you, by you.

Everything a Girl Scout does—whether it’s traveling the world, speaking their mind, or dreaming up new technology—has been developed especially for, and is tested by, girls and gender-expansive youth. Girl Scouts is a world where anyone who relates to the girl experience can do, and be, whatever they dream.



For more, scan the QR to read our [Policy for Building Equitable Community for All.](#)

## Our Mission

Girl Scouts builds girls of courage, confidence, and character, who make the world a better place.

## The Girl Scout Law

I will do my best to be  
honest and fair,  
friendly and helpful,  
considerate and caring,  
courageous and strong, and  
responsible for what I say and do,  
and to respect myself and others,  
respect authority,  
use resources wisely,  
make the world a better place, and  
be a sister to every Girl Scout.

## The Girl Scout Promise

On my honor, I will try:  
To serve God\* and my country,  
To help people at all times,  
And to live by the Girl Scout Law.

\*Members may substitute for the word God in accordance with their own spiritual beliefs.



# What Do Juliettes Do?

As a Juliette, you can do anything a Girl Scout in a troop can do! You'll discover new talents, connect with your community, and take action to make the world a better place.

## Attend Programs & Events

Meet other Girl Scouts by attending events, programs, or camps run by our council, volunteers, and partners.

Local Girl Scout communities (Service Units) may also host events and are a great way Juliettes can meet other Girl Scouts in their area.



## Earn Badges & Learn New Skills

Explore your interests across our four program pillars: STEM, Life Skills, Outdoors, and Entrepreneurship. Whether you're coding a robot or pitching a tent, Girl Scout handbooks and badge pamphlets provide all the guidance you need to lead your own journey.



## Step Into Your Leadership Journey

Go for the Highest Awards—the most prestigious honors in Girl Scouting. Through these meaningful, youth-led projects, Juliettes grow as changemakers identifying issues in their communities, creating thoughtful action plans, and leading sustainable projects that create lasting impact.



**Bronze Award:**  
Juniors  
(Grades 4–5)



**Silver Award:**  
Cadettes  
(Grades 6–8)



**Gold Award:**  
Seniors & Ambassadors  
(Grades 9–12)

## Take Action in Your Community

Part of the Girl Scout Law is to “make the world a better place.” Work solo or with your Girl Scout community to carry out this Girl Scout tradition.

You can also participate in a National Service Project or earn a Leadership Award by mentoring younger Girl Scouts at troop meetings, events, camp, and more.



## Travel with Girl Scouts

Ready to see the world? Girl Scouts in 6th grade and up can experience leadership opportunities and cross-cultural understanding through regional, national, and international travel.



## Adventure at Camp

Looking for outdoor adventures? From local day camps to unforgettable overnight experiences, plus whole-family camp options, there's something for everyone to explore.

Camp is thoughtfully designed so every camper can shine as their own unique self. It's the perfect place to challenge yourself, build confidence, and connect with nature.



## Participate in Entrepreneurship Programs

Learn business skills including goal setting, decision making, money-management, people skills, and business ethics. Plus, you'll earn council credits to help power your Girl Scout activities.



Fall Product Program is a friends and family sale where Girl Scouts sell nuts, candies, magazines, BARK boxes, and more.



The Girl Scout Cookie Program is where Girl Scouts gain entrepreneurship skills and earn funds to power their Girl Scout experiences.

## FUNding Your Juliette Experience

Power your adventures through our Entrepreneurship Programs! By participating in the Fall Product and Cookie Programs, you earn Juliette Funds. These credits are managed by Girl Scouts of Northern California and can be used to offset the cost of your favorite Girl Scout activities.

- Reimbursement
- Membership Renewal\*
- Program Registration\*
- Camp\*
- Highest Award Projects
- Travel
- GSUSA & GSNorCal retail shops

\*Additional financial aid is available. See page 9 for details.



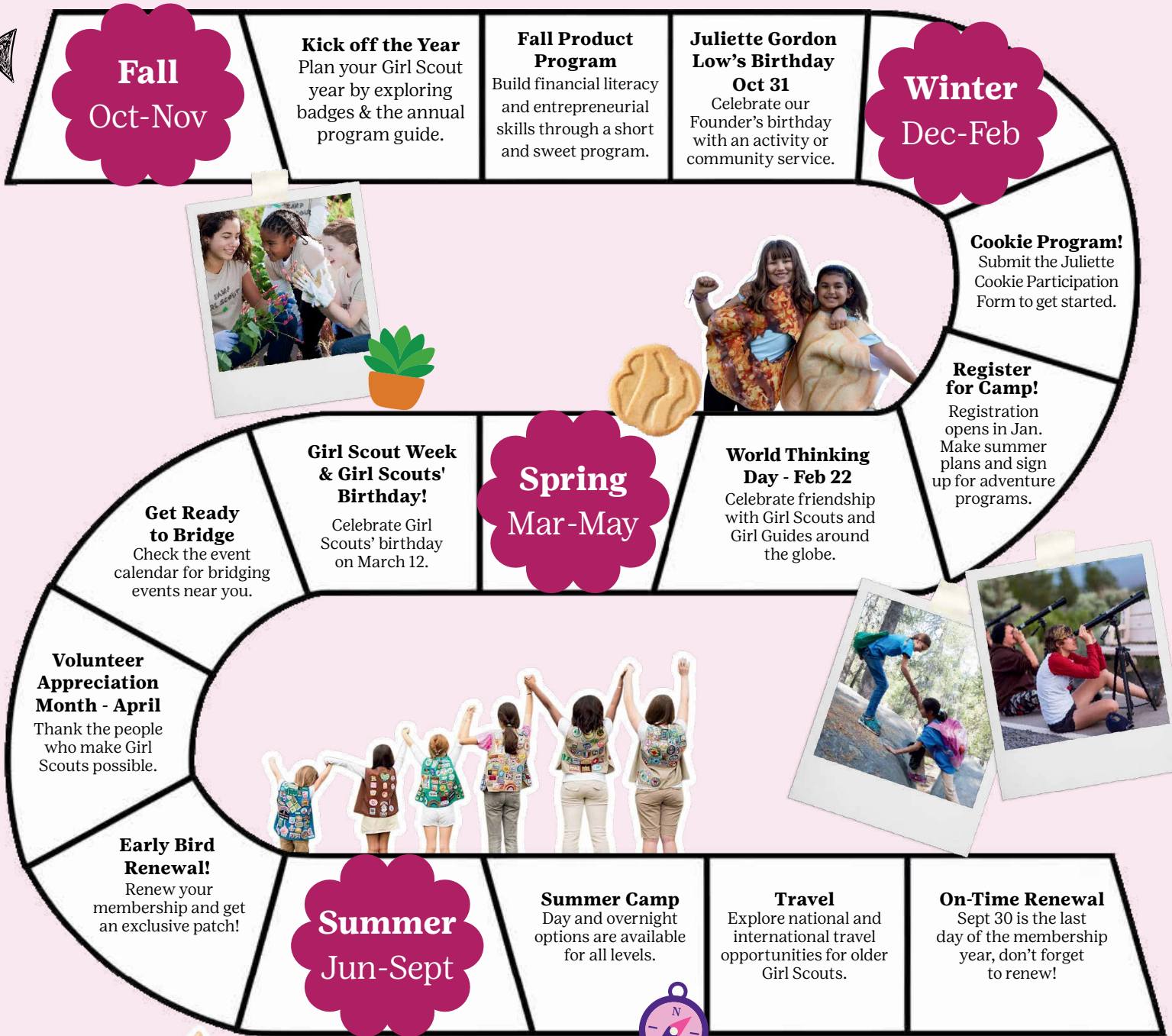
[Learn More](#)



# Juliette Road Map

Start Here!

The Girl Scout year runs from Oct 1 - Sept 30. Follow the game board to learn about all the things Juliette Girl Scouts can do throughout the year.



## All Year Round



**Badge Work**  
Earn foundational badges and leadership awards.

**Community Service**  
Make the world around you a better place.

**Highest Awards**  
Take action and make a lasting impact.

**Activities & Events**  
Have fun and learn while making new friends!



## How to Become a Juliette

The Girl Scout membership year runs October 1 – September 30.

### Ready to join?

Visit [www.gsnorcal.org/join](http://www.gsnorcal.org/join) or scan the QR code to get started. Annual membership fees are listed on the site.

1. Click "Join Now" to register on myGS
2. Click "Find a troop" and enter search criteria
3. Scroll to bottom of troop list
4. Click "Join without a troop"
5. Continue with registration



## Financial Aid is Available!

We understand that cost can be prohibitive. Girl Scouts of Northern California offers a comprehensive financial aid program to assist with membership dues, uniforms, programs, camp, and more.

Scan the QR code to learn more about [financial aid](#).



## Girl Scout Gear



Juliettes earn badges and awards that resonate with them, proudly displaying these on a tunic, sash, or vest. This century-old tradition connects them to Girl Scout sisters nationwide. Juliettes have a special patch symbolizing their unique identity in place of a troop number.

**Juliettes**

### Shopping list:

- Sash, Vest, or Tunic
- Juliette Patch
- Council Identification Set
- Insignia Tab
- Flag Patch
- Membership Pin

## Retail

Our shop is your resource for Girl Scout uniforms, pins, badges, and books, as well as all the latest in apparel, gifts, jewelry, accessories, and more!

### Alameda

1301 Marina Village Pkwy  
#200, Alameda, CA 94501

### San Jose

1310 S Bascom Ave,  
San Jose, CA 95128

### Redding

1670 Market St #248,  
Redding, CA 96001

### Santa Rosa

4825 Old Redwood Hwy,  
Santa Rosa, CA 95403

### Ways to Shop

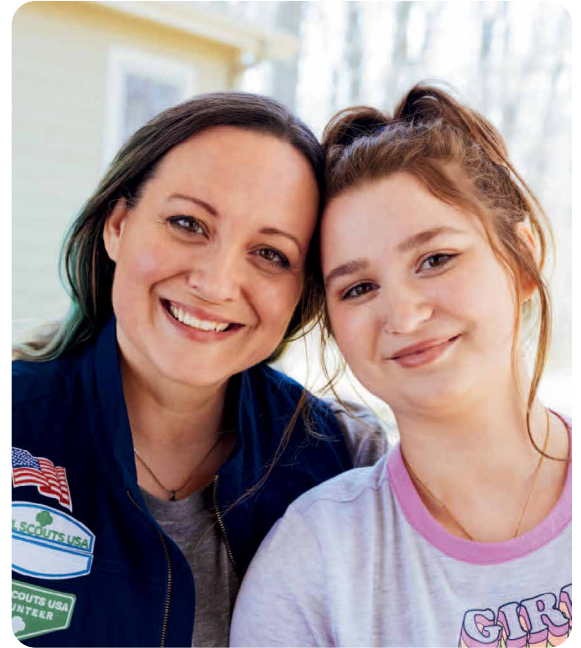


# Leading Your Juliette

Girl Scout Juliettes is a youth-led, family-driven experience. As a caregiver/mentor of a Juliette, you and your Girl Scout will be partners, shaping and sharing in the fun of the Girl Scout Leadership Experience.

## Juliette Mentors

- Are encouraged to register as an adult volunteer and complete the required background check, take training, and attend activities with your Girl Scout.
- Support your Juliette's commitment to Girl Scouting.
- Seek out and relay information and opportunities for your Juliette Girl Scout.
- Help your Juliette plan their Girl Scout year.
- Connect with your local service unit for wider opportunities and local connections.
- Follow Volunteer Essentials and Safety Activity Checkpoints (page 2) to keep your Juliette safe.
- Connect with other leaders in your community.

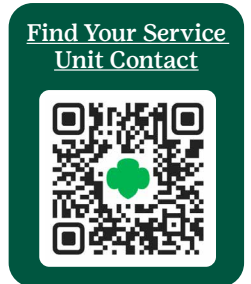


## Your Support Network

Girl Scouts of Northern California council is divided into geographic areas called "Service Units." Service Units consist of Girl Scout youth and adults from the local community and surrounding schools. They are led by volunteers, with the support of council staff. These Service Units often plan out local activities and community service and are another resource for Girl Scout activities. Use the space below to note your local support network.

## Looking for Additional Support?

If you have any questions or need assistance, our Customer Care team can help! We are available Monday-Friday from 9:00am - 5:00pm. Contact us by phone at 800-447-4475 or email [info@gsnorcal.org](mailto:info@gsnorcal.org).



**Connect with your local staff support for your service unit information.**

### Service Unit Information:

Service Unit #: \_\_\_\_\_

Name: \_\_\_\_\_

Email: \_\_\_\_\_

### Local Volunteer Support Meetings:

Day/Frequency: \_\_\_\_\_

Time: \_\_\_\_\_

Location: \_\_\_\_\_

# *My Juliette Journal*

**This journal belongs to:** \_\_\_\_\_

**My Juliette Mentor (name and contact number):**

\_\_\_\_\_  
\_\_\_\_\_



**Interest and ideas I want to explore as a Juliette:**

1. \_\_\_\_\_
2. \_\_\_\_\_
3. \_\_\_\_\_

**What I hope to discover as a Juliette:**

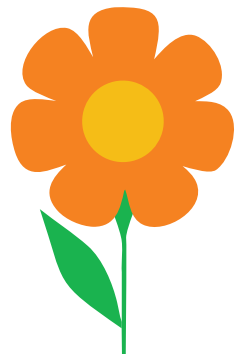
1. \_\_\_\_\_
2. \_\_\_\_\_
3. \_\_\_\_\_

**Ways I want to connect with my community:**

1. \_\_\_\_\_
2. \_\_\_\_\_
3. \_\_\_\_\_

**How I hope to make the world a better place:**

1. \_\_\_\_\_
2. \_\_\_\_\_
3. \_\_\_\_\_





girl scouts   
of northern california



Follow us on social  
@gsnorcal

info@gsnorcal.org | 1-800-447-4475  
www.gsnorcal.org