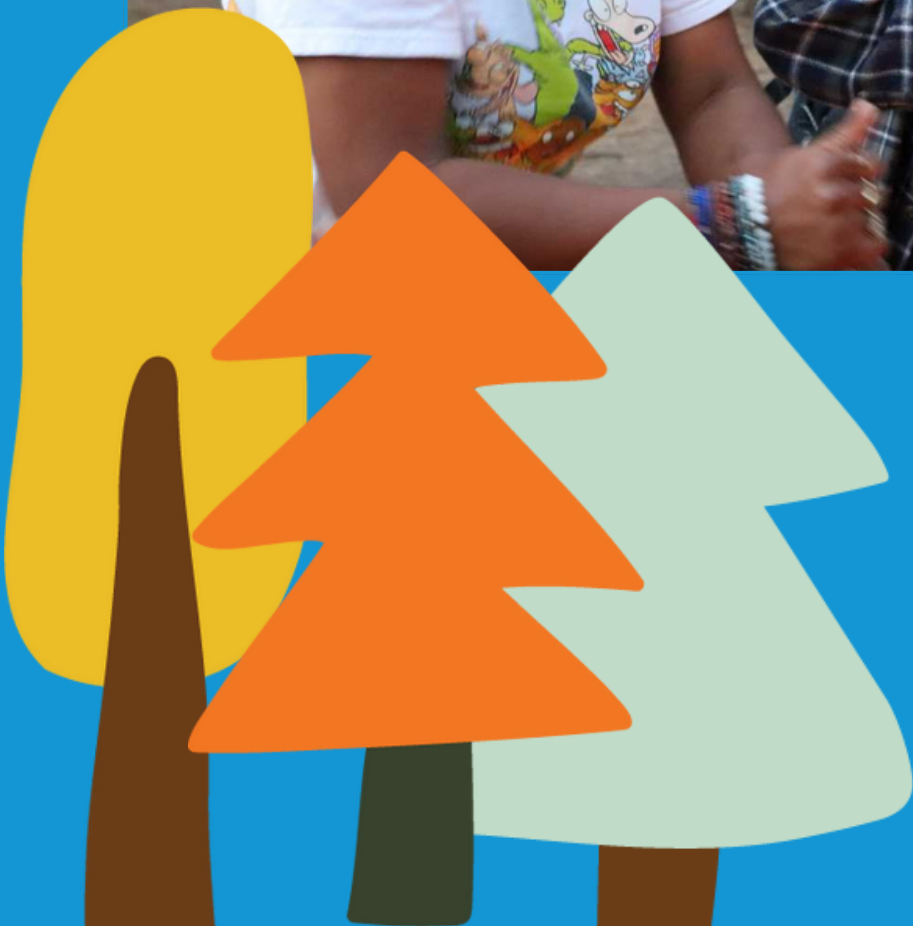


2024 Summer Camp Positions



Camp Bothin

Position	Description
Assistant Camp Director	The Assistant Camp Director is responsible for the development, implementation, administration, and supervisory coordination of camp.
Program Manager	The Program Manager is responsible for the design, development, and implementation of specialized program activities.
Healthcare Manager	The Healthcare Manager is responsible for providing health and safety services to campers and staff.
Wellness Advisor	The Wellness Advisor provides health and safety services and is responsible for the emotional well-being of campers and staff.
Unit Leader	Unit Leaders care for campers and provide mentorship and assistance to Unit Counselors.
Off Broadway Lead Counselor	The Off Broadway Lead Counselor is the primary caregiver for older campers in Off Broadway performing arts and theater program.
CIT Lead Counselor	CIT Lead Counselor is the primary caregiver for older campers enrolled in various stages of the Counselor in Training (CIT) program.
Unit Counselor	Unit Counselors are the primary caregivers for campers.
Art Specialist	The Art Specialist plans, coordinates, and delivers arts and crafts activities.
Nature Specialist	The Nature Specialist is responsible for the facilitation of nature and environment activities while maintaining the nature center and related equipment.
STEM Specialist	The STEM Specialist plans, coordinates, and teaches a program that includes engineering design challenges, simple circuit projects, and/or tinkering activities.
Ropes Course Lead	The Ropes Course Lead manages the physical operation of all ropes courses and related equipment.
Ropes Course Specialist	The Ropes Course Specialist plans and facilitates teambuilding/adventure programs on a high element ropes course.
Camp Operations Specialist	The Camp Operations Specialist reviews and maintains all camp supply inventories, is responsible for fleet management, and carries out tech operations of camp.
Camp Communications Manager	The Camp Communications Manager is responsible for the daily uploading of photos and camp updates to designated social media.
Pool Lifeguard	A Pool Lifeguard is responsible for providing supervision and ensuring a safe environment at the camp's aquatics activities.
Kitchen Assistant	The Kitchen Assistant assists in the maintenance of the kitchen and prepares meals to all campers, staff, and guests.



Camp Hidden Falls

Position	Description
Property Assistant	The Property Assistant helps with the upkeep and maintenance of camp property and equipment over the summer.
Operations Manager	The Camp Operations manager maintains supplies, delivers meals and equipment; assists with camp activities, and supports the camp director in all facets of the camp program.
Travel Coordinator	The Travel Coordinator schedules and coordinates with outside vendors the travel plans for all off-camp trips for campers.
Program Manager	The Program Manager is responsible for the design, development, and implementation of all program activities for on-camp programs.
Art Specialist	The Art Specialist develops and delivers arts and crafts activities that are safe, fun and appropriate to the campers' ages and abilities.
Handcrafting Specialist	The Handcrafting Specialist will teach creativity and basic household repairs using skills such as sewing, woodworking, and hand tool use for crafting activities on camp.
Lifeguard	A Lifeguard is responsible for providing supervision and ensuring a safe environment at the camp's waterfront activities.
Assistant Camp Director	The Assistant Camp Director is responsible for the development, implementation, administration and coordination of camp.
Camp Co-Director	The Camp Co-Director oversees program development and implementation, manages staff, and is responsible for the administrative duties of camp.
Unit Manager	Unit Managers are responsible for supervising groups of counselors and providing support in program planning and implementation for Lead Counselors and Unit Counselors.
Unit Counselor	Unit Counselors are the primary caregivers for campers. Responsible for planning, teaching, coordinating and carrying out activities and guiding campers in their personal growth and daily living skills.
Lead Counselor	The Lead Counselor is responsible for the development and implementation of camp unit programs as well as planning and teaching activities and guiding campers in their personal growth and daily living skills.
Health Supervisor	The Health Supervisor is responsible for providing health and safety services to campers and staff and implementing camp-wide health and safety guidelines to mitigate risk of injury and illness.
Health Assistant	The Health Assistant assists in providing health and safety services to campers and staff.
Wellness Assistant	The Wellness Assistant assists with the emotional well-being of campers and staff by teaching age-appropriate coping tools and strategies

Camp Hidden Falls contin.

Position	Description
Kitchen Lead	The Kitchen Lead is responsible for overseeing food services - primarily the distribution of ingredients to campsites for camper units for the campers to cook meals over fire, as well as preparing extra meals for support/office staff and sick campers. They are responsible for menu planning and ensuring that meals are well rounded and suitable for special diets.
Kitchen Team Member	Kitchen Team Members assist with distribution of ingredients to campsites for camper units for the campers to cook meals over fire, as well as preparing extra meals for support/office staff and sick campers.
Cooking Program Specialist	The Cooking Program Specialist gets campers and staff excited about cooking! They will develop and deliver age-appropriate outdoor cooking programming for units on camp.
Flex Counselor	The Flex Counselor assists in multiple programs throughout camp throughout a session, often on an as-needed basis to fill gaps in camper supervision.
Communications Assistant	The Communications Assistant is responsible for taking and uploading photos to Companion (camp-to-parent social media), parent newsletters, and camper group photos. Assists the Operations Manager with camper mail and additional tasks as needed.
Target Sports Specialist	The Target Sports Specialist manages & teaches archery and hatchet-throwing programming in addition to camp event programming.
Spanish Language Specialist	The Spanish Language Specialist gets campers excited about learning Spanish! Leads fun Spanish Language programming with campers, assists with translating as needed, helps with camp event programming.

Camp Sugar Pine

Position	Description
Assistant Camp Director	The Assistant Camp Director is responsible for the development, implementation, administration, and supervisory coordination of camp.
Camp Communication Manager/ Photographer	The Camp Communication Manager is responsible for the daily taking and uploading of photos and camp updates to designated social media.
Counselor	Counselors are the primary caregivers for campers.
Adventure Manager	The Adventure Manager oversees and manages the Adventure Specialists at Sugar Pine. Adventure Managers help facilitate and coordinate all programs and activities related to the ropes course and archery range.
Aquatics Manager	The Aquatics Manager is responsible for supporting the planning and delivery of a swimming and boating program at camp.
Arts and Crafts Specialist	The Arts and Crafts Specialist plans, coordinates, and delivers arts and crafts activities.
Boating Specialist/ Boating Lifeguard	The Boating Specialist/Lifeguard is a certified lifeguard that assists with the physical operation of the pool and waterfront facilities and equipment.
Driver	The Driver is responsible for providing transportation for campers, boats, and equipment to various local activity sites.
Equestrian Manager	The Equestrian Manager is responsible for the planning and delivery of a riding program at camp and manages the physical operation of the horseback riding facilities and animals.
Riding Instructor	The Riding Instructor assists in implementing a riding program and provides care and maintenance to horses and related equipment.
Healthcare Manager	The Healthcare Manager is responsible for providing health and safety services to campers and staff.
Kitchen Assistant	The Kitchen Assistant assists in the maintenance of the kitchen and prepares meals to all campers, staff, and guests.
Lead Counselor	Lead Counselors care for campers and provide mentorship and assistance to Counselors.
Leadership Director	The Leadership Manager is the primary caregiver for older campers enrolled in various stages of the Counselor in Training (CIT) program.
Program Director	The Program Manager is responsible for the design, development, and implementation of specialized program activities.
Wellness Manager	The Wellness Manager provides health and safety services and is responsible for the emotional well-being of campers and staff.
Nature Specialist	The Nature Specialist coordinates and delivers nature and science-based programs for a variety of age groups throughout the camp.
Operations Director	The Operations Director is responsible for the administration and coordination of camp operations and logistics.